

UNITED

**Water
Products**
A PUPCO Brand

U

Mechanical

Flange Adapters &

N

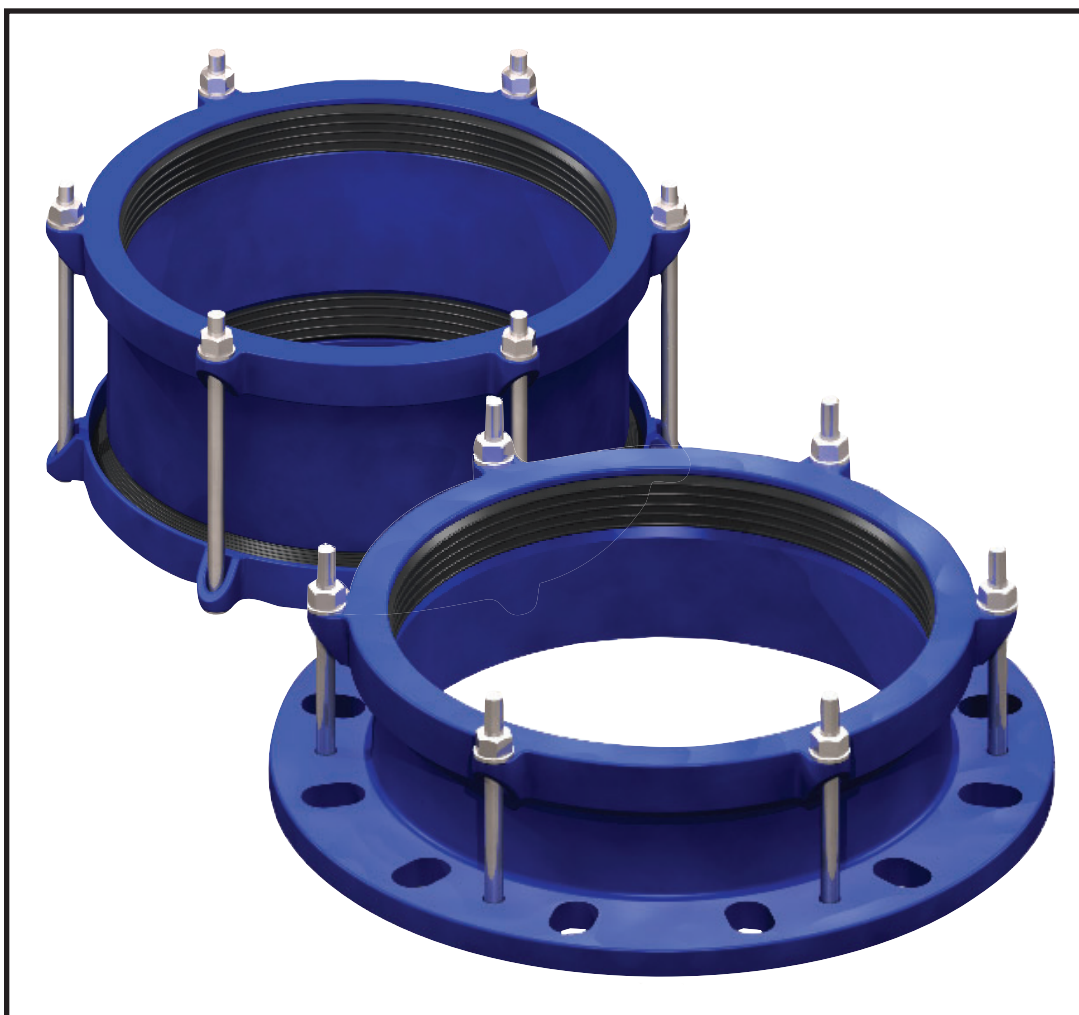
Couplings

I

F

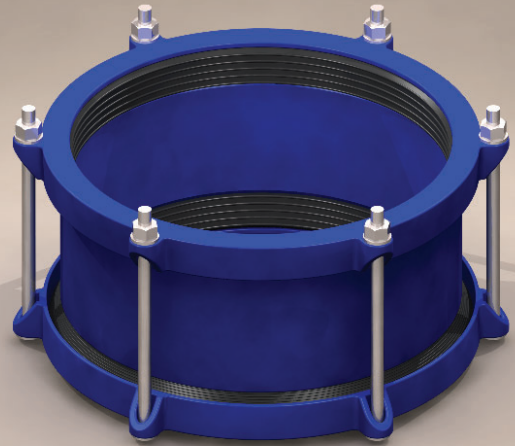
I

T



Wide Range Coupling

SERIES 4200



MATERIAL LIST

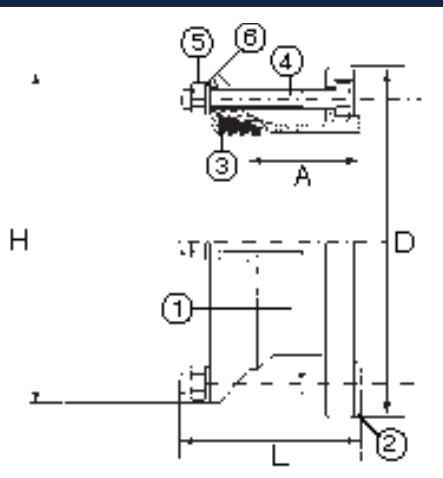
1. Middle Ring Ductile Iron
ASTM A536
Grade 65-45-12
2. End Ring Ductile Iron
ASTM A536
Grade 65-45-12
3. Gasket EPDM
4. Bolt High Strength
Zinc Coated
Steel*
5. Nut High Strength
Zinc Coated
Steel
6. Washer High Coated
Zinc Plated
Steel
7. Coating Fusion Bonded
Epoxy Coated
to 200 Microns**

* Stainless Steel Type 304
Optional

** NSF 61 Approved Material

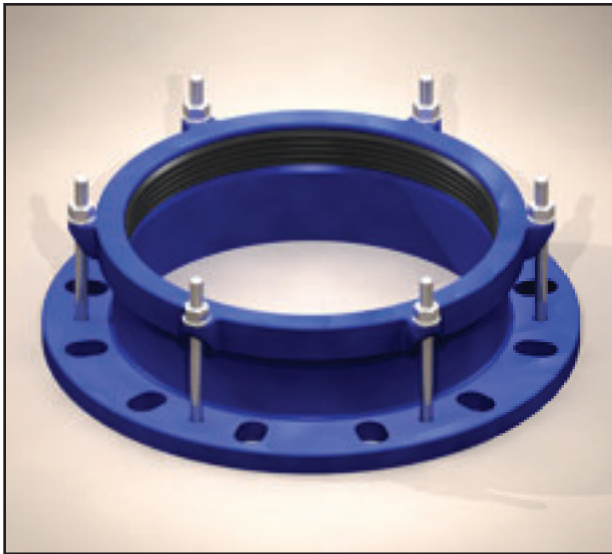
Working Pressure: 250 psi

Part Number	Nominal Diameter	OD Range	L	No. of Bolts	H	A	Weight
	DN Inches	mm inch	Bolt Length		mm inch	Sleeve Length	Kgs. Lbs.
4200-020	DN40	48-60	M12 x 200	2	148	100	3.0
	1.5	1.89-2.36	1/2 x 7.8		5.8	4	6.5
4200-025	DN50	59-72	M12 x 200	2	166	100	4.0
	2	2.32-2.84	1/2 x 7.8		6.5	4	8.0
4200-030	DN65	72-85	M12 x 200	2	180	100	4.5
	2.5	2.84-3.35	1/2 x 7.8		7.1	4	10.0
4200-035	DN80	88-103	M12 x 225	4	203	125	6.5
	3	3.46-4.06	1/2 x 8.8		8.0	5	14.0
4200-040	DN100	109-128	M12 x 225	4	228	125	6.5
	4	4.29-5.04	1/2 x 8.8		9.0	5	14.0
4200-045	DN125/150	132-146	M12 x 225	4	244	125	7.0
	5/6	5.20-5.75	1/2 x 8.8		9.6	5	15.0
4200-050	DN125/150	138-153	M12 x 225	4	251	125	7.0
	5/6	5.43-6.02	1/2 x 8.8		9.9	5	15.0
4200-055	DN150	159-182	M12 x 225	4	277	125	8.5
	6	6.26-7.16	1/2 x 8.8		10.9	5	19.0
4200-060	DN200	192-210	M12 x 225	6	310	125	11.5
	8	7.60-8.26	1/2 x 8.8		12.2	5	25.0
4200-065	DN200	218-235	M12 x 225	6	340	125	11.5
	8	8.58-9.25	1/2 x 8.8		13.4	5	25.0
4200-070	DN200	230-247	M12 x 225	6	347	125	12.0
	8	9.06-9.72	1/2 x 8.8		13.7	5	26.0
4200-075	DN250	250-267	M12 x 225	6	371	125	15.0
	10	9.84-10.51	1/2 x 8.8		14.6	5	33.0
4200-080	DN250	272-289	M12 x 225	6	395	125	18.0
	10	10.70-11.38	1/2 x 8.8		15.6	5	40.0
4200-085	DN300	315-332	M12 x 225	8	438	125	19.0
	12	12.40-13.07	1/2 x 8.8		17.2	5	42.0
4200-090	DN300	322-339	M12 x 225	8	442	125	21.0
	12	12.68-13.35	1/2 x 8.8		17.4	5	45.0
4200-095	DN300	332-349	M12 x 225	8	453	125	23.0
	12	13.07-13.74	1/2 x 8.8		17.8	5	50.0
4200-100	DN350	374-391	M16 x 320	8	508	200	36.0
	14	14.72-15.39	5/8 x 12.5		20.0	8	78.0
4200-105	DN400	390-410	M16 x 320	8	540	200	40.0
	16	15.35-16.15	5/8 x 12.5		21.2	8	86.0
4200-110	DN400	418-435	M16 x 320	8	551	200	40.0
	16	16.45-17.12	5/8 x 12.5		21.7	8	86.0
4200-120	DN450	476-493	M16 x 320	10	622	200	53.0
	18	18.74-19.41	5/8 x 12.5		24.5	8	116.0
4200-130	DN500	5276-549	M16 x 320	10	672	200	60.0
	20	20.70-21.60	5/8 x 12.5		26.5	8	132.0
4200-140	DN600	654-672	M16 x 320	10	776	200	72.0
	24	25.75-26.45	5/8 x 12.5		30.6	8	158.0



Tel: 877-766-4459

Wide Range Adapter



SERIES 4400

MATERIAL LIST

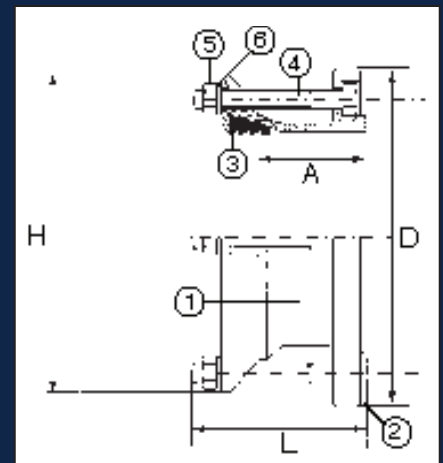
1. Body Ductile Iron
 ASTM A536
 Grade 65-45-12
2. End Ring Ductile Iron
 ASTM A536
 Grade 65-45-12
3. Gasket EPDM
4. Bolt High Strength
 Zinc Coated
 Steel*
5. Nut High Strength
 Zinc Coated
 Steel
6. Washer High Coated
 Zinc Plated
 Steel
7. Coating Fusion Bonded
 Epoxy Coated
 to 200 Microns**

* Stainless Steel Type 304
Optional

** NSF 61 Approved Material

Working Pressure: 250 psi

Part Number	Nominal Diameter	OD Range	Flange Drilling	L	No. of Bolts	D	H	A	Weight
	DN			Bolt Length		mm	mm	Sleeve Length	
	Inches	mm				inch	inch		Lbs.
4428-025	DN50	59-72	ANSI 125/150 & EN PN10/16	M12 x 135	2	165	166	75	3.5
	2	2.32-2.84		1/2 x 5.3		6.4	6.4	3	7.5
4428-030	DN65	72-85	ANSI 125/150 & EN PN10/16	M12 x 135	2	185	180	75	4.5
	2.5	2.84-3.35		EN PN10/16		7.2	7.02	3	9.5
4428-035	DN80	88-103	ANSI 125/150 & EN PN10/16	M12 x 135	4	200	203	75	5.5
	3	3.46-4.06		1/2 x 5.3		7.8	7.30	3	11.5
4428-040	DN100	109-128	ANSI 125/150 & EN PN10/16	M12 x 135	4	229	228	75	6.0
	4	4.29-5.04		1/2 x 5.3		9.02	8.98	3	13.0
4428-045	DN125/150	132-146	ANSI 125/150 & EN PN10/16	M12 x 135	4	279.4	244	75	7.5
	5/6	5.20-5.75		1/2 x 5.3		11	9.61	3	16.0
4428-050	DN125/150	138-153	ANSI 125/150 & EN PN10/16	M12 x 135	4	279.4	252	75	7.5
	5/6	5.43-6.02		1/2 x 5.3		11	9.83	3	16.0
4428-055	DN150	159-182	ANSI 125/150 & EN PN10/16	M12 x 155	4	279.4	277	75	8.5
	6	6.26-7.16		1/2 x 6.1		11	10.91	3	18.0
4428-060	DN200	192-210	ANSI 125/150 & EN PN10/16	M12 x 155	4	340	310	75	11.0
	8	7.60-8.26		1/2 x 6.1		13.2	12.20	3	24.0
4428-065	DN200	218-235	ANSI 125/150 & EN PN10/16	M12 x 155	4	340	341	75	11.5
	8	8.58-9.25		1/2 x 6.1		13.2	13.43	3	24.5
4428-075	DN250	250-267	ANSI 125/150 & EN PN10/16	M12 x 155	6	406.4	371	75	14.5
	10	9.84-10.51		1/2 x 6.1		16	14.60	3	31.0
4428-080	DN250	272-289	ANSI 125/150 & EN PN10/16	M12 x 155	6	406.4	395	90	15.0
	10	10.70-11.38		1/2 x 6.1		16	15.55	3 1/2	32.0
4428-085	DN300	315-332	ANSI 125/150 & EN PN10/16	M12 x 155	6	482.6	438	90	20.0
	12	12.40-13.07		1/2 x 6.1		19	17.24	3 1/2	43.0
4428-090	DN300	322-339	ANSI 125/150 & EN PN10/16	M12 x 155	6	482.6	442	100	20.5
	12	12.68-13.35		1/2 x 6.1		19	17.40	4	45.0
4428-095	DN300	332-349	ANSI 125/150 & EN PN10/16	M12 x 155	6	482.6	453	90	21.5
	12	13.07-13.74		1/2 x 6.1		19	17.83	3 1/2	47.0
4428-100	DN350	374-391	ANSI 125/150	M16 x 200	8	520	508	130	28.0
	14	14.72-15.39		5/8 x 7.98		20.4	20.00	5	64.0
4428-110	DN400	418-435	ANSI 125/150	M16 x 200	8	580	552	130	35.0
	16	16.45-17.12		5/8 x 7.98		23.2	21.73	5	77.0
4428-120	DN450	476-493	ANSI 125/150	M16 x 200	10	636	622	130	41.0
	18	18.74-19.41		5/8 x 7.98		25	24.49	5	90.0
4428-130	DN500	527-544	ANSI 125/150	M16 x 220	10	710	672	150	54.0
	20	20.75-21.42		5/8 x 8.66		27.95	26.48	6	119.0
4428-140	DN600	630-647	ANSI 125/150	M16 x 220	10	835	776	150	71.0
	24	24.80-25.47		5/8 x 8.66		32.8	30.57	6	154.0



Tel: 877-766-4459

UNITED

**Water
Products**
A PUPCO Brand



United Water Products
8710 Air Park West Drive, Charlotte, NC 28214
TEL. 877-766-4459
Website: www.unitedwaterproducts.com